

N.E. 1/4 OF  
SECTION 34, T.7N., R.1W., S.L.B.&M.

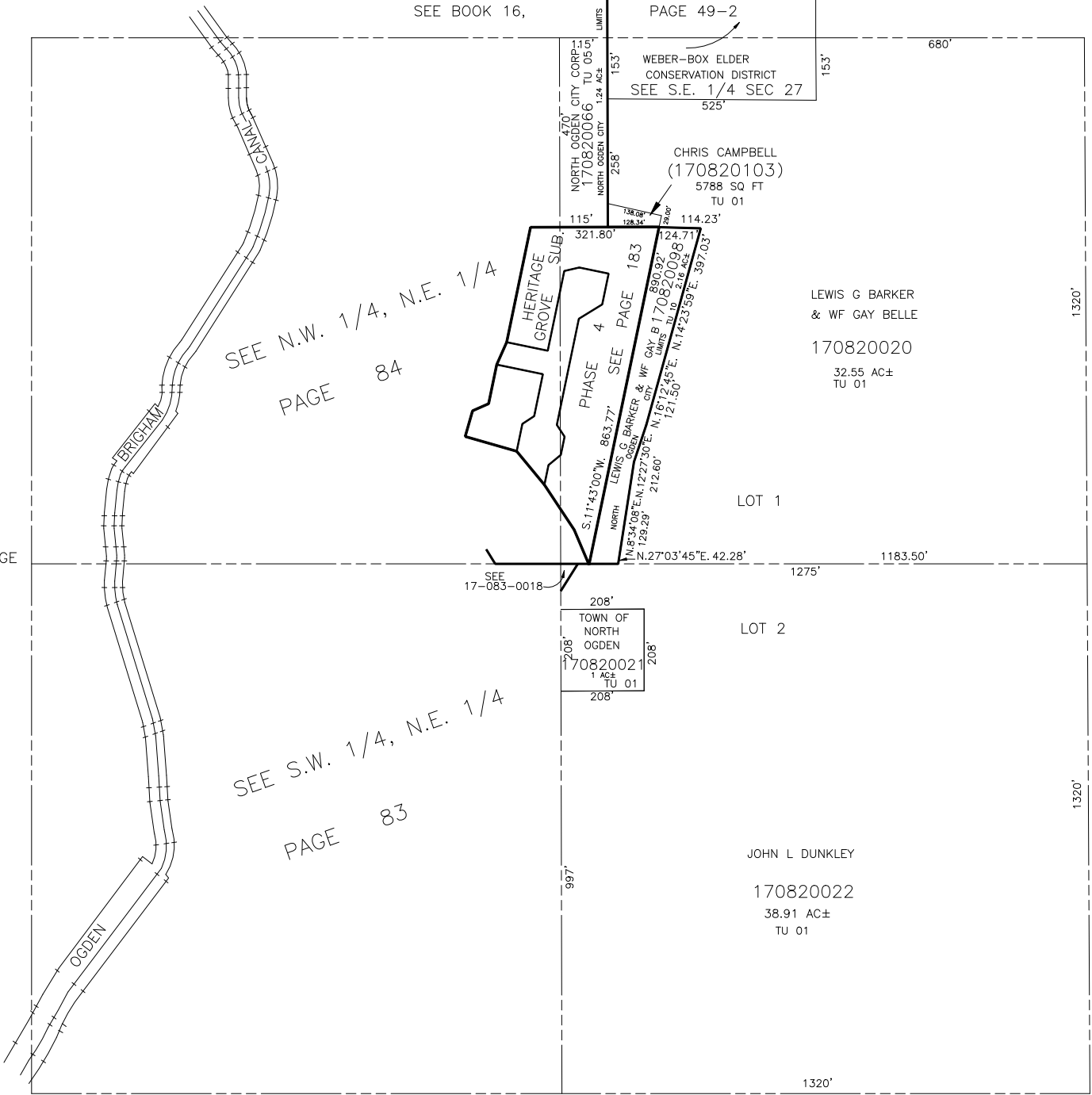
NORTH OGDEN CITY & WEBER COUNTY

TAXING UNIT: 01, 05, 10

SCALE 1" = 200'

SEE BOOK 16,

PAGE 49-2



SEE PAGE  
82-4

SEE PAGE  
90

SEE S.W. 1/4, N.E. 1/4  
PAGE 83

SEE PAGE 82-2